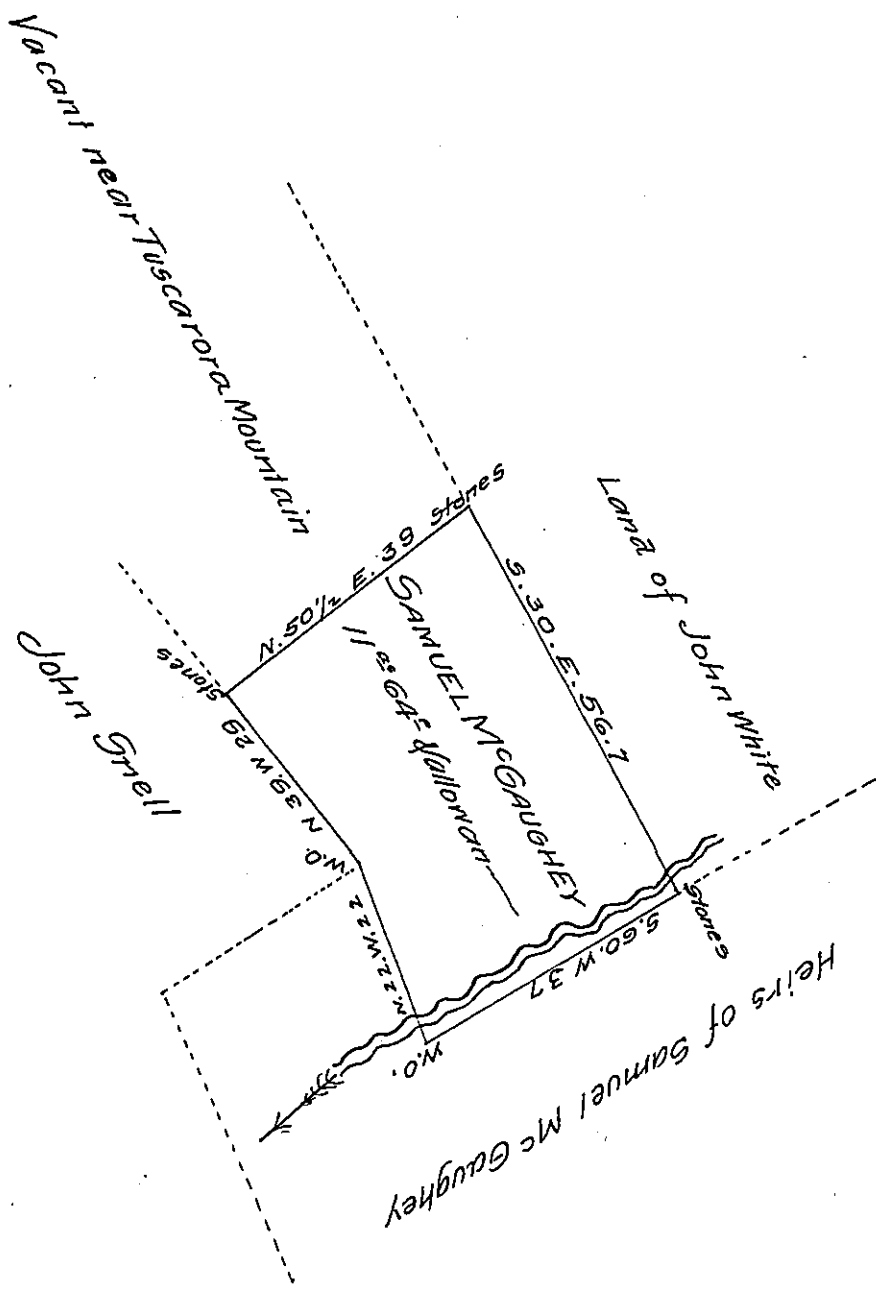


FORM NO. 1.



County  
 Situate in Tyboine Township Perry, Containing Eleven acres Sixty four perches  
 & allowance of six per cent for roads &c. Surveyed April 26<sup>th</sup> 1821. in pursuance  
 of a warrant granted Samuel M<sup>c</sup> Gaughey for 9<sup>th</sup> dated October 6<sup>th</sup> 1818

ps W<sup>m</sup> Wilson D. S.

Gabriel Hiester Esq<sup>r</sup>  
 Surveyor General of Pa.

IN TESTIMONY that the above is a copy of the original remaining on file in  
 the Department of Internal Affairs of Pennsylvania, made  
 conformably to an Act of Assembly approved the 16th day of  
 February 1833, I have hereunto set my hand and caused  
 the Seal of said Department to be affixed at Harrisburg,  
 this seventeenth day of December 1907

*Henry Howard*  
 Secretary of Internal Affairs.